

## Job Description

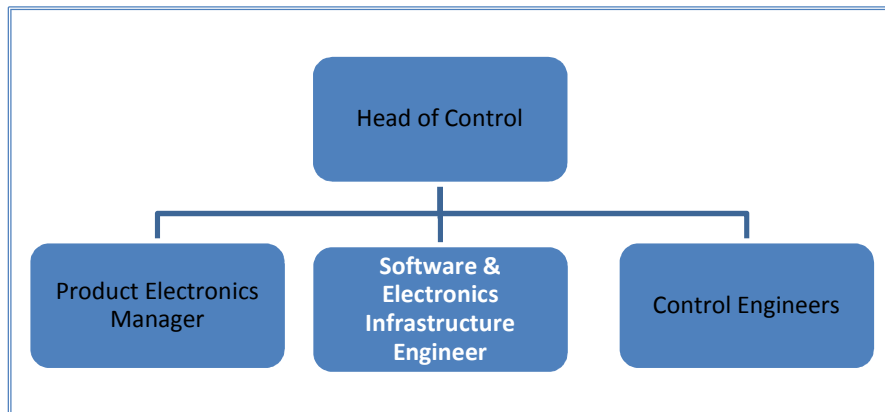
**Job Title:** Software and Electronics Infrastructure Engineer

**Reports to:** Head of Control

**Direct reports:** None

**Budgetary Responsibility:** None

**Organogram:**



### Purpose of the Job

To agree requirements for, design, implement and support the infrastructure surrounding the micro-CHP product, including:

- Communications over IP
- Database and data retrieval of long term (product life) and short term (a few minutes) performance
- Communications with industry standard in-home embedded electronics devices

### Key Accountabilities

- Responsible for defining and implementing the remote access and diagnostic interfaces to the product, including live data access and remote re-flashing
- Responsible for specifying and implementing data capture, reduction and presentation on product's collective performance
- Responsible for the external communications interfaces to heating controllers and in-home displays
- Responsible for specifying and procuring remote logging and instrumentation equipment
- Supporting field trials to ensuring data quality and communications up-time for deployed products

- Responsible for ensuring that communications interfaces meet UK and European standards, and influencing the development of these standards where possible. This includes RF standards for CE marking as well as communications standards to home networks and smart meters.

### **Key Results Areas – to do**

- Interface protocols are well specified and documented so that all parties can work independently on their own implementations
- Remote access interfaces are defined and implemented which mean that the CHP product can be remotely monitored, diagnosed and re-programmed thereby reducing site visits and providing customers with field data
- Data interfaces are made robust so that data is available when needed and that data is not lost or corrupted

### **Internal & External Relationships**

#### Internal

- Head of Control – regular updates on progress, issues and risks
- Control and Electronics team – multiple interactions around specifications, implementation and testing of interfaces
- Product Management – agree written specification for product and infrastructure
- Rest of company – support with field use

#### External

- Electronics suppliers – liaison on hardware and software implementation
- Home area network partners – defining, implementing and testing interfaces
- Standards and certification bodies – ensuring compliance with standards and influencing their development

### **Knowledge, Skills and Experience**

#### Required:

- Degree qualified (or equivalent) in an appropriate engineering discipline (e.g. software engineering, IT, electronics engineering or telecommunications)
- Experience of defining and implementing communications protocols
- Experience of data reduction for communication from many points over a public network
- Experience of data collation and presentation
- Good interpersonal and time management skills
- Able to author and maintain technical specification documents to quality standards
- Experience of specifying and/or implementing embedded software systems or sub-systems

**Desirable:**

- Knowledge of short range RF, mesh networks, (e.g. ZigBee), and at least one of the following: point to point serial comms, (e.g. RS232/485), Bus Networks (eg Controller Area Network )
- Experience of implementing low cost RF solutions (e.g. Zigbee)
- Experience with Controller Area Network (CAN)
- Experience with diagnostics protocols (e.g. KWP2000, CCP, Smart Appliances)
- Project management skills

Role is ideally suited to someone who has experience of middleware development and system integration in a telecoms/set top box environment.

**Remuneration**

The ideal candidate will receive a competitive salary, together with a benefits package including excellent contributory pension, cycle to work scheme, life insurance, childcare voucher and share save scheme.

**To apply**

Please send a full CV detailing relevant experience together with details of current remuneration package to: [recruitment@cerespower.com](mailto:recruitment@cerespower.com) or Ceres Power Ltd, Unit 18 Denvale Trade Park, Haslett Avenue East, Crawley, West Sussex, RH10 1SS [www.cerespower.com](http://www.cerespower.com)

---